

Jefferson School

Student Pickup & Turn-In Day

MONDAY, MAY 18

8:00 AM - 5:00 PM

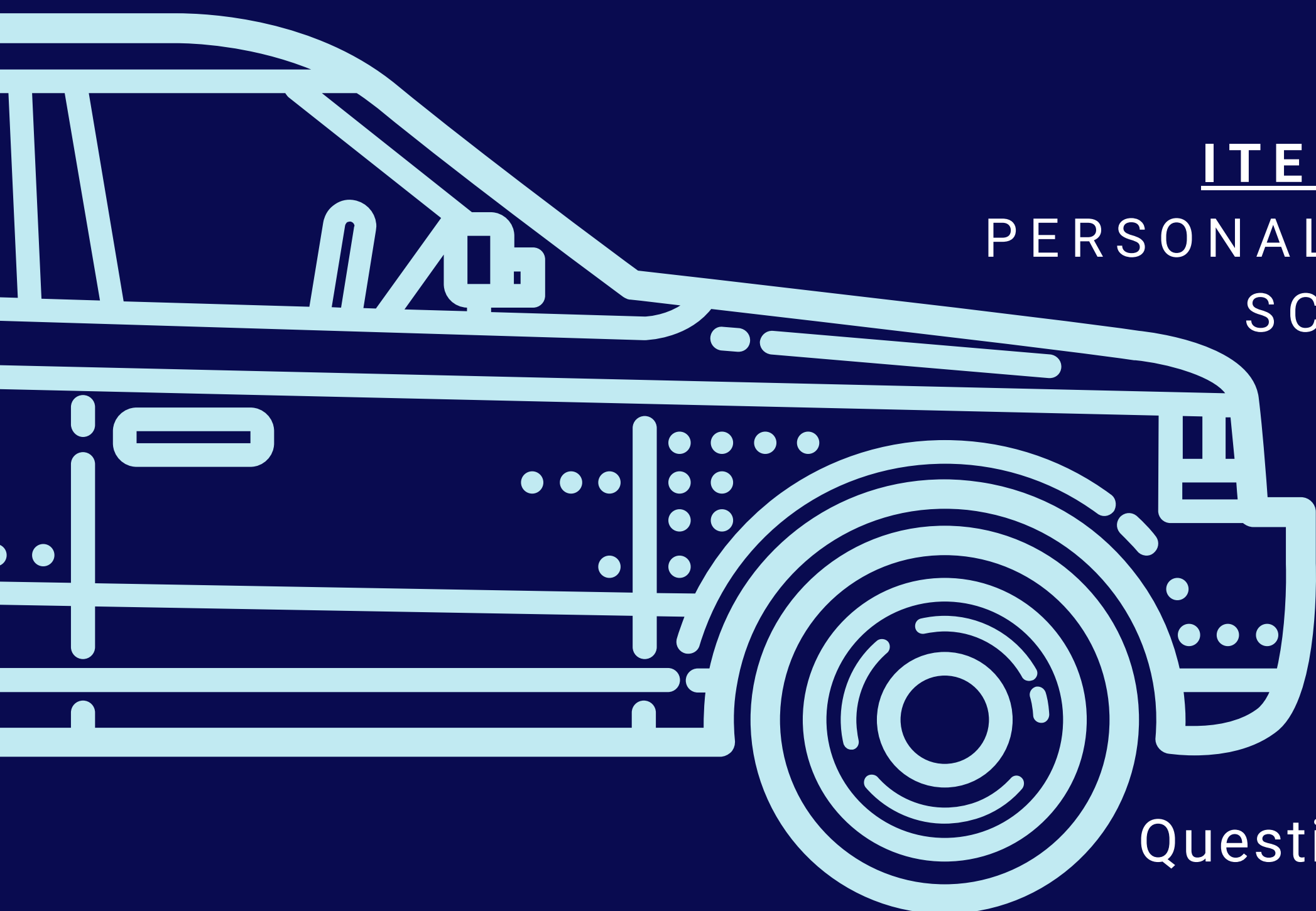
DRIVE-THRU - BUS LANE
PLEASE REMAIN IN YOUR VEHICLE

ITEMS TO TURN-IN:

TECHNOLOGY - IPAD & CHARGER
TEXTBOOKS
LIBRARY BOOKS

ITEMS TO PICK-UP:

PERSONAL BELONGINGS &
SCHOOL SUPPLIES



Questions? Call 263-2650